



AREA PROFILE

**BRIEF OUTLINE OF THE 2021
CENSUS WHEN COMPARING IT TO
THE NATIONAL AVERAGE AND
LOOKING BACK TO THE PREVIOUS
10 YEARS**

POPULATION



1700 PEOPLE

1,700 people were reported as living in Wem Rural Parish Council in the 2021 Census. (Rounded to the nearest 100). In the previous Census of 2011 the number of people living in the parish was 1,659.



Sex

■ Wem Rural | (England and Wales)

Female **48.7%** (51.0%)

Male **51.3%** (49.0%)

% of all people

680 Households

In the 2021 Census

Gender:

In the 2021 Census:

51.3% of the population are male (Nat. avg. is 49.0%) and 48.7% are female (Nat. avg. is 51.0%)

In the 2011 Census:

49.5% of the population were male and 50.5% are female. THERE ARE NOW SLIGHTLY MORE MEN THAT LIVE IN THE PARISH.

There were 630 household spaces in 2011. Of these, 602 (95.6%) had at least one usual resident and 28 (4.4%) had no usual residents.

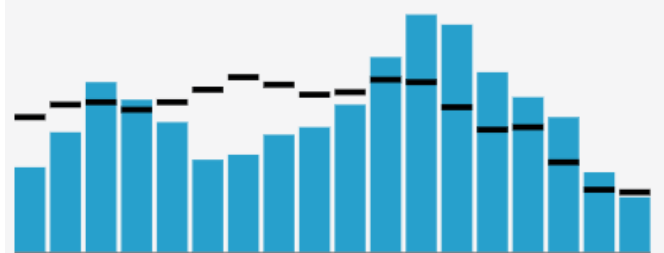
Age:

There are more 50-84 year olds living in Wem Rural than the national average.

The average (mean) age of residents in 2011 was 40.3 years.

Age profile

■ Wem Rural — (England and Wales)



0 years

85+

% of all people, 5 year age bands

HOUSEHOLD

Composition

More people living in the Wem Parish either own their own home outright or with a mortgage than the national average:

- Own Outright: **48.3%** (National Average 32.5%). This was 42.2% in the 2011 Census
- Own with Mortgage: 31.7% (National Average 29.8%). This was 38.5% in the 2011 Census
- Social Housing 7.0% (National Average 17.1%). 6.1% in 2011 Census

Household Size

Just less than half of the people that live in the Wem Rural Parish live in households of 2 people (41.5%). This is 7.5% higher than the national average.

Wem is higher than the national average when it comes to more than 4 people living in the same household

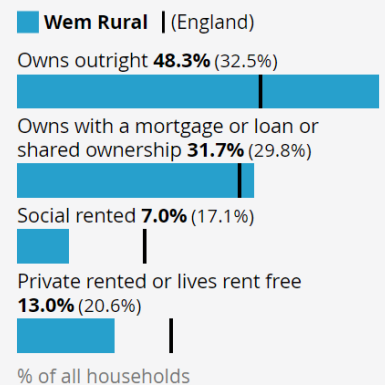
The 2011 Census shows us that 17.1% of households had 1 person which is fairly similar.

There is significantly a larger proportion of houses with 4+ bedrooms when compared to the national average.

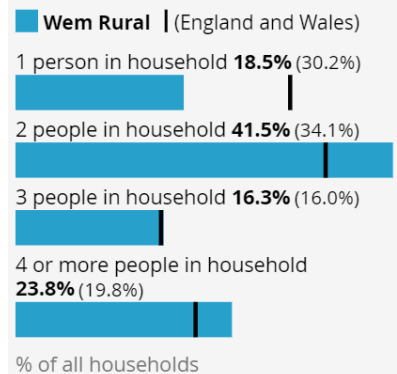
In the 2021 Census:

4 or more bedrooms **42.6%** (National Average is 21.1%)

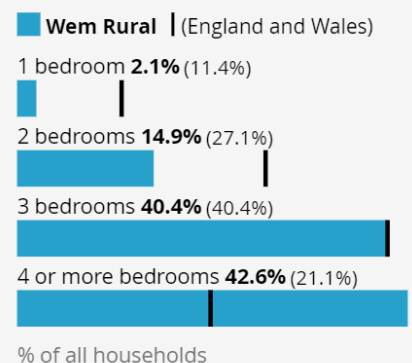
Tenure of household



Household size



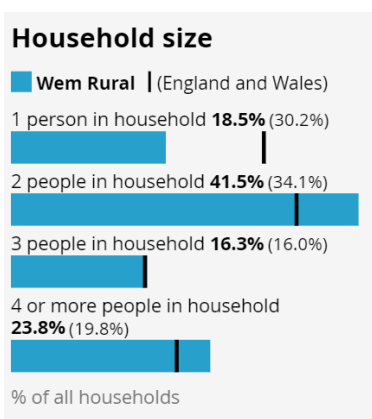
Number of bedrooms



HOUSEHOLD

Deprivation

The dimensions of deprivation used to classify households are indicators based on four selected household characteristics (Education, Employment, Health & Housing)



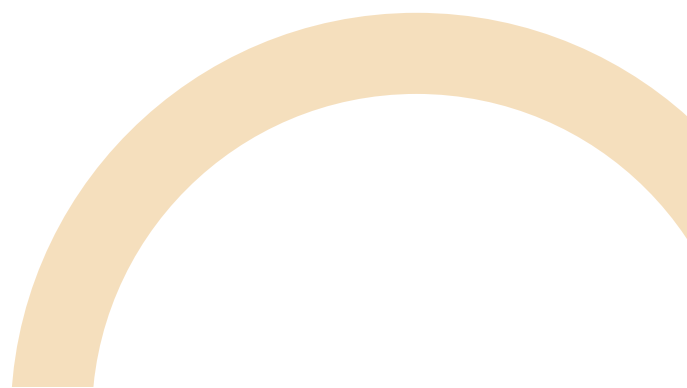
- Household is not deprived in any dimension **54.7%** (National Average 48.4%)
- Household is deprived in one dimension 34.4% (National Average 33.5%)

This question was not asked in the 2011 Census so we can't compare household deprivation over the previous 10 years.

Accommodation Type

In the 2021 Census 98.1% of people live in the whole house. The Nat. Avg. is 77.4% The amount of people living in flats, maisonette or apartment is only 1.0%. When compared to the Nat. Avg of 22.2% this clearly shows the type of housing in Wem Rural.

This is similar to the 2011 Census.



MARITAL STATUS

Legal Partnership Status

- Never married and never registered a civil partnership 27.8% (nat. avg. 37.9%)
- Married or in a registered civil partnership 56.8% (nat. avg. 44.7%)
- Separated, but still legally married or still legally in a civil partnership 1.3% (nat. avg. 2.2%)
- Divorced or civil partnership dissolved 8.7% (nat. avg. 9.1%)
Widowed or surviving civil partnership partner 5.5% (nat. avg. 6.1%)

The 2011 Census showed that 60% of people were married and only 6.7% of people divorced shows that there may have been some divorces over the last 10 years however it is still lower than the national average.

RELIGION & ETHNICITY

Religion

The results from the 2021 Census show the following:

- No religion 31.4% (nat. avg. 36.7%)
- Christian 60.4% (nat. avg. 46.3%)
- The majority of other people chose not to answer this question.

When comparing this the 2011 Census 71.1% of people classed themselves as Christian and 21% with no religion.

Whilst those recongising themselves as Christian has quite considerably decreased over the last 10 years (10%) it is still significantly higher than the national average.

Ethnicity

The ethnic groups reported in the 2021 Census are:

- Asian, Asian British or Asian Welsh 0.5% (nat. avg. 9.6%)
- Black, Black British, Black Welsh, Caribbean or African 0.2% (nat. avg. 4.2%)
- Mixed or Multiple ethnic groups 0.6% (nat. avg. 3.0%)
- White 98.3% (nat. avg. 81.0%)
- Other ethnic group 0.4% (nat. avg. 2.2%)

These figures are similar when compared to the 2011 Census were 98.6% of people were classed as white showing that there has been very little change in ethnicity over the past 10 years.

HEALTH & DISABILITY

General Health

Results from the 2021 Census are:

- Very good health 50.7% (nat. avg. 48.5%)
- Good health 33.0% (nat. avg. 33.7%)
- Fair health 12.4% (nat. avg. 12.7%)
- Bad health 3.0% (nat. avg. 4.0%)
- Very bad health 0.9% (1.2%)

When compared to the 2011 Census:

- 52.3% were recorded as good health
- 33% good health
- 11.2% fair health

These figures does show a slight deterioration however as it's slightly higher or similar to the national average this is not significant to show any major concerns with health for an ageing population.

Disability

- In the 2021 Census the number of people Disabled under the Equality is Act 14.3% (nat. avg. 17.3%)
- Those not disabled under the Equality Act 85.7% (nat. avg. 82.7%)

In the 2011 Census 25.6% of people had one person in household with a long-term health problem or disability

EMPLOYMENT

In Employment

- In the 2021 Census 60.5% of people were employed (this is higher than the national average of 57.4%). This has reduced since the 2011 Census (69.1%)
Unemployment is at 2.8% (Again lower than the national average of 3.5%). This was 2.7% in the 2011 Census

Economic activity status

■ **Wem Rural** | (England and Wales)

Economically active: In employment
60.5% (57.2%)



Economically active: Unemployed
2.8% (3.4%)



Economically inactive **36.7%** (39.4%)



% of people aged 16 years and over

Occupation:

- Managers, directors and senior officials is 20.0% (nat. avg. of 12.9%)
- Professional occupations is 14.8% (lower than the nat. avg. of 20.3%)
- Associate professional and technical occupations 11.3% (slightly lower than nat. avg. of 13.3%)
- Administrative and secretarial occupations 10.4% (nat. avg. 9.3%)
- Skilled trades occupations 16.6% (nat. avg. 10.2%+)
- Caring, leisure and other service occupations 9.0% (nat. avg. 9.3%)
- Sales and customer service occupations 3.5% (nat. avg. 7.5%)
- Process, plant and machine operatives 6.5% (nat. avg. 6.9%)
- Elementary occupations 8.0% (nat. avg. 10.5%)

Results from the 2011 Census show:

- A slight increase of over 3% of Managers, directors and senior officials
- A slight decrease of Professional occupations 2%
- A slight increase of 1.3% Associate professional and technical occupations
- A slight increase of Administrative and secretarial occupations
- A slight decrease of Skilled trades occupations
- A 2% increase in Caring, leisure and other service occupations
- Half of the jobs in Sales and customer service occupations
- A slight increase in Process plant and machine operatives
A slight decrease in Elementary occupations

EMPLOYMENT

Socio-economics:

- L1, L2 and L3: Higher managerial, administrative and professional occupations **13.9%** (13.2% Nat. Avg). This was 10.6% in 2011.
- L4, L5 and L6: Lower managerial, administrative and professional occupations 20.3% (19.9% Nat. Avg) 22.5% in 2011
- L8 and L9: Small employers and own account workers **21.3%** (Nat. Avg. is 10.6%) and was 23.9% in 2011 shows a higher number of smaller businesses operating from Wem Rural.

Socio-economic Classification (NS-SeC)

Wem Rural | (England and Wales)

L1, L2 and L3: Higher managerial, administrative and professional occupations **13.9%** (13.1%)



L4, L5 and L6: Lower managerial, administrative and professional occupations **20.3%** (19.9%)



L7: Intermediate occupations **10.8%** (11.4%)



L8 and L9: Small employers and own account workers **21.3%** (10.6%)



L10 and L11: Lower supervisory and technical occupations **5.0%** (5.4%)



L12: Semi-routine occupations **10.3%** (11.4%)



L13: Routine occupations **7.8%** (12.1%)



L14.1 and L14.2: Never worked and long-term unemployed **5.5%** (8.5%)



L15: Full-time students **5.1%** (7.7%)



% of people aged 16 years and over

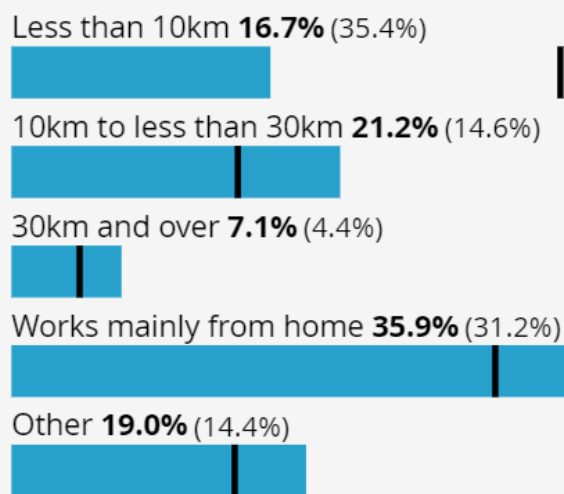
EMPLOYMENT

Hours Worked per week:

- Part-time: 15 hours or less worked
11.8% (nat. avg. 10.3%)
- Part-time: 16 to 30 hours worked
20.9% (nat. avg. 19.5%)
- Full-time: 31 to 48 hours worked 45.6%
(nat. avg. 59.1%)
- Full-time: 49 or more hours worked
21.7% (nat. avg. 11.1%)

Distance travelled to work

Wem Rural | (England and Wales)



% of people aged 16 years and over in employment

TRAVEL & TRANSPORT

Method of Travel to the Workplace:

- 36.1% of people in Wem Rural work mainly from home. This is slightly higher than the nat. avg. of 31.5%
- The amount of people driving a car or van to work is 53.8% which is higher than the nat. avg. of 44.5%
- The amount of people that need to use public transport to work is minimal which correlates with the lack of public transport in the area.

Distance travelled to work

■ **Wem Rural** | (England and Wales)

Less than 10km **16.7%** (35.4%)

10km to less than 30km **21.2%** (14.6%)

30km and over **7.1%** (4.4%)

Works mainly from home **35.9%** (31.2%)

Other **19.0%** (14.4%)

% of people aged 16 years and over in employment

Number of cars or vans

- No cars or vans in household 3.5% (nat. avg. 23.5%)
- 1 car or van in household 27.1% (nat. avg. 41.3%)
- 2 cars or vans in household 39.7% (nat. avg. 26.1%)
- 3 or more cars or vans in household 29.6% (nat. avg. 9.1%)

EDUCATION

Highest level of qualification

- No qualifications 14.8% (nat. avg. 18.1%)
- Level 1, 2 or 3 qualifications (GCSE - A Levels) 42.3% (nat. avg. 39.9%)
- Apprenticeship 5.9% (nat. avg. 5.3%)
- Level 4 qualifications (Degree) and above 34.3% (nat. avg. 33.9%)
- Other qualifications 2.7% (nat. avg. 2.8%)

Distance travelled to work

■ **Wem Rural** | (England and Wales)

Less than 10km **16.7%** (35.4%)

10km to less than 30km **21.2%** (14.6%)

30km and over **7.1%** (4.4%)

Works mainly from home **35.9%** (31.2%)

Other **19.0%** (14.4%)

% of people aged 16 years and over in employment

School children and full-time students

- Student 17.7% (nat. avg. 20.4%)
- Not a student 82.3% (nat. avg. 79.6%)

SUMMARY

A typical person

When comparing the results from the 2021 Census to the UK national average there is a clear distinction that the majority of people living in Wem Rural are UK born, white, English-speaking and are typically over the age of 50.

They are likely to have at least 1 car, own their own home, married, Christian, in good health and work from or run a small business from home.

Changes over the last 10 years

When comparing the results from the 2021 Census to the UK national average there is a clear distinction that the majority of people living in Wem Rural are UK born, white, English-speaking and are typically over the age of 50.

They are likely to have at least 1 car, own their own home, married, Christian, in good health and work from or run a small business from home.

Overall, the comparisons in statistics from the 2021 and 2011 Census shows very little change over the 10 year period with the exception of religion where 10% of the population no longer identify themselves as Christian.

